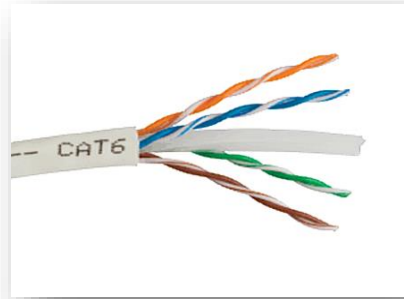


## Lewins Line

### **HNS648 Copper Cable, Category 6, 4 Pair, UTP, 23 AWG, 305 MTR.**



#### **Product Classification**

**Portfolio**

**LEWINS-LINE®**

**Product Type**

**Twisted pair cable**

**Regional Availability**

**TURKEY/CHINA |**

#### **Cross Section Drawing**

**4 Twisted Pair Cable**

**Outer Jacket**

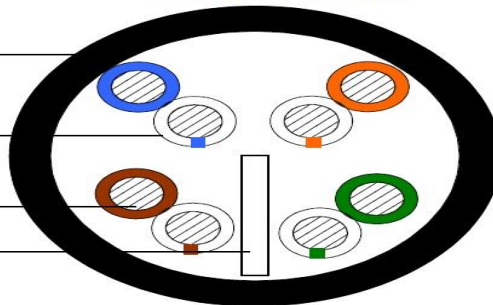
Plenum: Flex PVC  
Non-Plenum: FR-PVC

**Pair Insulation**

Plenum: FEP  
Non-Plenum: PE

**23 AWG Solid Copper**

**Separator Tape**



**Lewins-line®**

©2020 LEWINS-LINE, Inc. All rights reserved. All trademarks identified by ® or ™ are registered trademarks, respectively, of LEWIN-LINE. All specifications are subject to change without notice. See [www.Lewins-line.com](http://www.Lewins-line.com) for the most current information.

Revised: February 02, 2020

**Lewins Line****Technical Information**

<b>Cable Type</b>	<b>U/UTP CAT6-4PAIR-PVC COPPER</b>		
<b>Conductor</b>	MATERIAL	PURE COPPER	
	[MM] SIZE	0.56mm	0.005
			-0.005
<b>Insulation OF Cords</b>	MATERIAL	HDPE	
	DIAMETER	1.02±0.04mm	
<b>Cross Skeleton</b>	4.8		
<b>Sheath / Jacket</b>	THICKNESS	>0.485mm	
	OUTER DIAMETER	6.2±0.2mm	
	SURFACE	SMOOTHLY	
	MATERIAL	PVC	
	COLOR	GREY / ORANGE/BLUE	
<b>General Specifications</b>	Cable Type	U/UTP Cable	
	Conductor Gauge, singles	23 AWG	
	Conductor Type, singles	Solid	
	Conductors, quantity	8	
	Brand	Lewins-Line	
<b>Cable Print</b>	CABLE PRINT	According to buyer demand	
	height of words	3.0±0.3mm	
	color of words	black	
	gap	≤±0.5 % · 1M	

**Lewins-line®**

## Lewins Line

<b>Color OF Cores</b>	1) WHITE /BLUE	2) WHITE / ORANGE
	3) WHITE / GREEN	4) WHITE / BROWN
<b>Jacket Thickness</b>	0.559 mm   0.022 in	
<b>Cable Length PER PCS</b>	305 m Per box   1000 ft. (13 kg/305m)	
<b>Cable Weight</b>	22 lbs.  1000 ft. (10 kg/305m)	
<b>Packing</b>	2INNER BOX IN 1* CARTON	
<b>Carton Size</b>	47*40*40CM	
<b>Rip Cord</b>	300D STRAND	
<b>Test Standard</b>	FLUKE PEPMANENT LINK DTX-8000	
<b>Physical properties of outer sheath/JACKET</b>	BEFORE AGING Tensile strength [Mpa]≥13.5 elongation.[%]≥150	
	AFTER AGING Tensile strength (Mpa)≥12.5 elongation[%]≥125	
	AGING CONDITION [°C×hrs.] 100°C×24h×7d	
	COLD BEND [-20°C±2°C×4小时] NON -CRACKING	
<b>Electrical Performance[20°C]</b>	1.0-100.0 Characteristic Impedance[OHM] 100±15	
	1.0-100.0MHz Delay Skew 20°C[ns/100m] ≤45	
	DCR 20°C OHM /100m]max ≤15.5	
	Resistance Unbalance [%]max ≤5.0	
<b>Applications include</b>	Ethernet 10BASE-T, 100BASE-T (Fast Ethernet), and 1000BASE-T (Gigabit Ethernet)	



## *Lewins Line*

### **Mechanical Specifications**

Minimum Bend Radius, multiple bends 11 kg | 25 lb.

### **Regulatory Compliance/Certifications**

Quality Management System in line with  
GB/T19001-2016 IDT ISO9001:2015 Standard Scope Certification  
Digital Communication Cable (Communication Wire) Production

