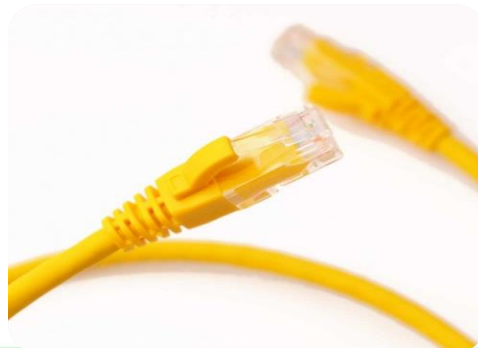


L-NS556

Lewins Line

L-NS556 UTP Patch Cord Cat 6

0.23 CM



Lewins-line®

Product Classification

<i>Portfolio</i>	LEWINS-LINE®
<i>Product Type</i>	Twisted pair cable
<i>Regional Availability</i>	Asia Australia/China

Lewins-line®

©2020 LEWINS-LINE, Inc. All rights reserved. All trademarks identified by ® or ™ are registered trademarks, respectively, of LEWIN-LINE. All specifications are subject to change without notice. See www.Lewins-line.com for the most current information.

Revised: February 02, 2020

Lewins Line**Technical Information**

Cable Type	U/UTP Patch Cord 0.23 CM-PVC COPPER STRANDS		
Conductor	MATERIAL	PURE COPPER	
	[MM] SIZE	7/0.18MM	+0.003MM
			-0.003MM
Insulation OF Cords	MATERIAL	HDPE	
	DIAMETER	0.94±0.05mm	
Sheath / Jacket	THICKNESS	>0.485mm	
	OUTER DIAMETER	5.7±0.2mm	
	SURFACE	SMOOTHLY	
	MATERIAL	PVC	
	COLOR	Yellow	
	CROSS SKELETON	4.8mmX4.8mm	
Cable Print	CABLE PRINT	According to buyer demand	
	height of words	3.0±0.3mm	
	color of words	black	
	gap	≤±0.5 % · 1M	



Lewins Line

Color OF Cores	1) WHITE /BLUE	2) WHITE / ORANGE	
	3) WHITE / GREEN	4) WHITE / BROWN	
Packing	PER CABLE IN PER BAG + EXPORTING CARTON		
Carton Size	48*31*27 cm		
Length Of Cable	0.23 CM		
Rib Cord	NOT	DRAIN	NOT
Test Standard	FLUKE test DTX-5000		
Physical properties of outer sheath/JACKET	BEFORE AGING	Tensile strength [Mpa]≥13.5	elongation.[%]≥150
	AFTER AGING	Tensile strength (Mpa)≥12.5	elongation[%]≥125
	AGING CONDITION [°C×hrs]	100°C×24h×7d	
	COLD BEND [-20°C±2°C×4	NON -CRACKING	
Electrical Performance[20°C]	1.0-100.0	Characteristic Impedance[OHM]	100±15
	1.0-100.0MHz	Delay Skew 20°C[ns/100m]	≤45
	DCR 20°C	OHM /100m]max	≤15.5
	Resistance Unbalance	[%]max	≤5.0

Regulatory Compliance/Certifications

Quality Management System in line with

GB/T19001-2016 IDT ISO9001:2015 Standard Scope Certification

Digital Communication Cable (Communication Wire) Production

